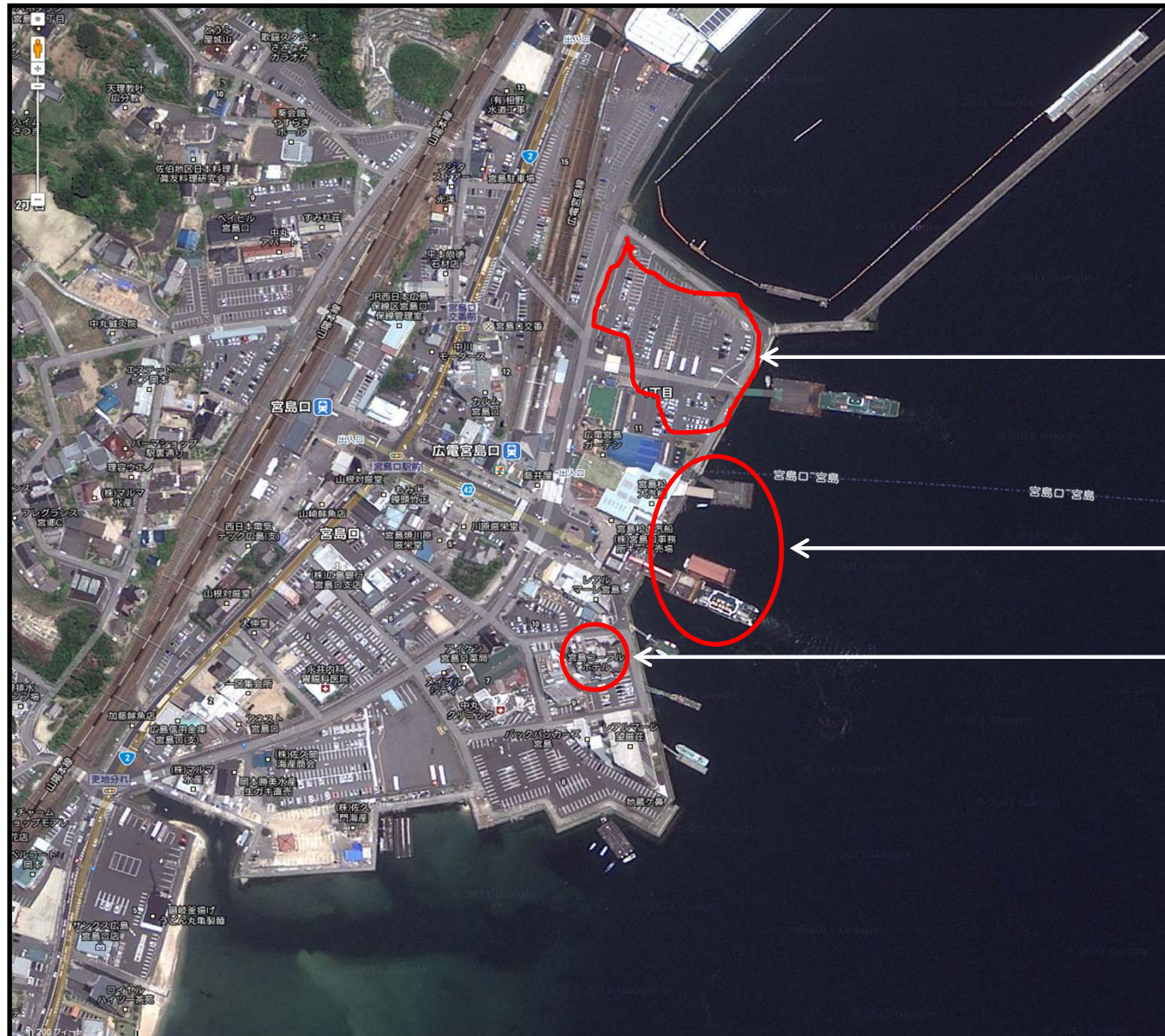


Excursion Meeting Point (Tuesday)

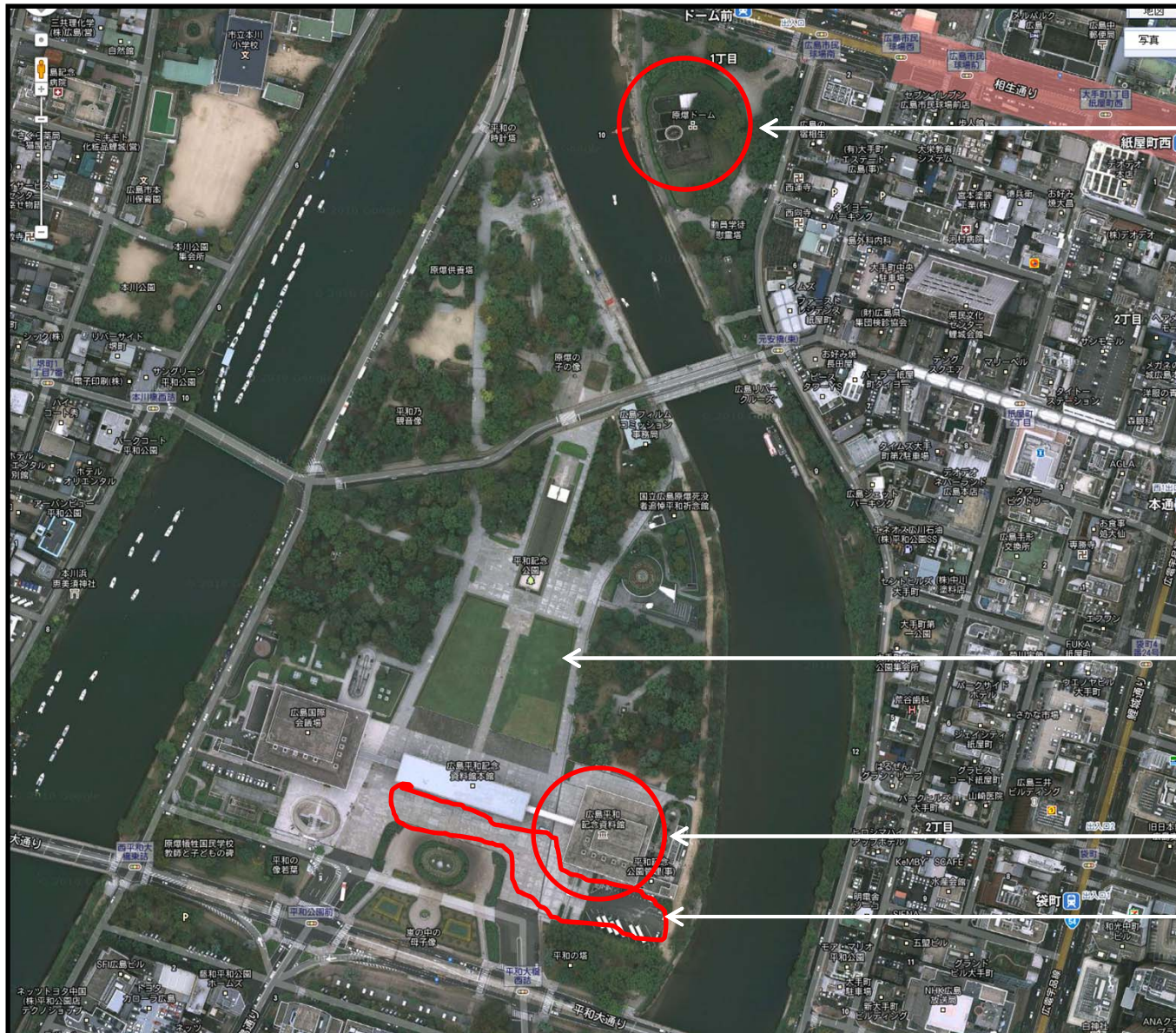


Parking lot, where
you get on the bus
at around 13:15

Ferry terminals
to/from Miyajima

Miyajima Coral Hotel

Excursion Bus “A” Stops



Atomic-Bomb Dome,
where you get off the bus
at around 16:30

Peace Memorial Park

Peace Memorial Museum

Sight-Seeing Bus Parking,
where you get on the bus
at around 18:00